

A Celebration of Children's Health



November 4, 2013

Rhode Island's Achievements In Children's Health

**We lead the nation in
health outcomes for
children and families.**

- Lowest child & teen deaths (1st)
- Vaccination coverage
 - 1+ MMR (1st)
 - 3+ Hib (1st)
 - 3+ Polio, 3+ HepB (3rd)
 - 4+ PCV, Rotavirus (3rd)



Rhode Island's Achievements In Children's Health

- Preventive dental care (7th)
- Teen births (7th)
- Repeat teen births (7th)
- Parents' health coverage (8th)
- Children's health coverage (10th)
- Teen obesity (13th)
- Preterm births (13th)

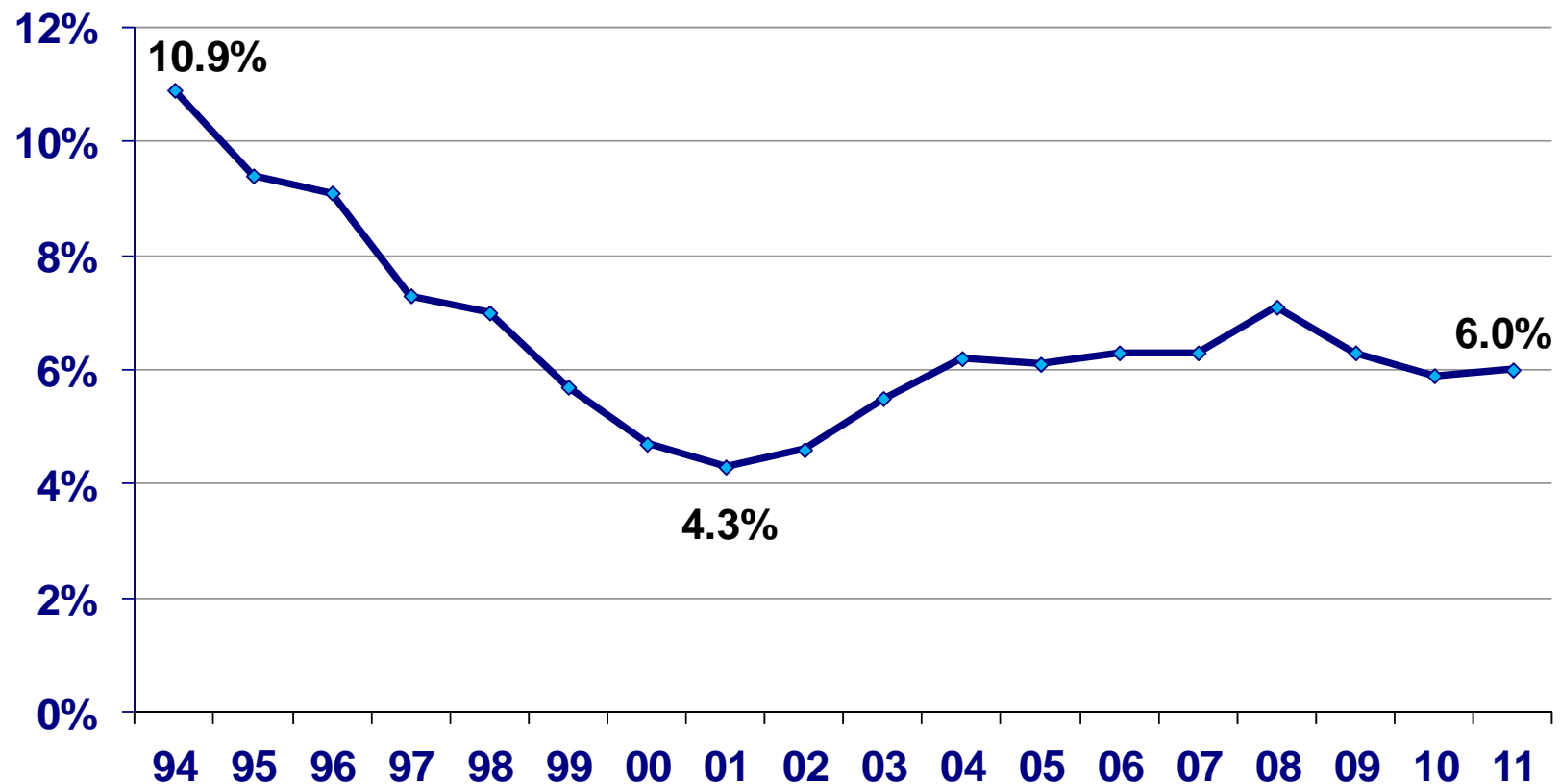


Our Shared Goal:



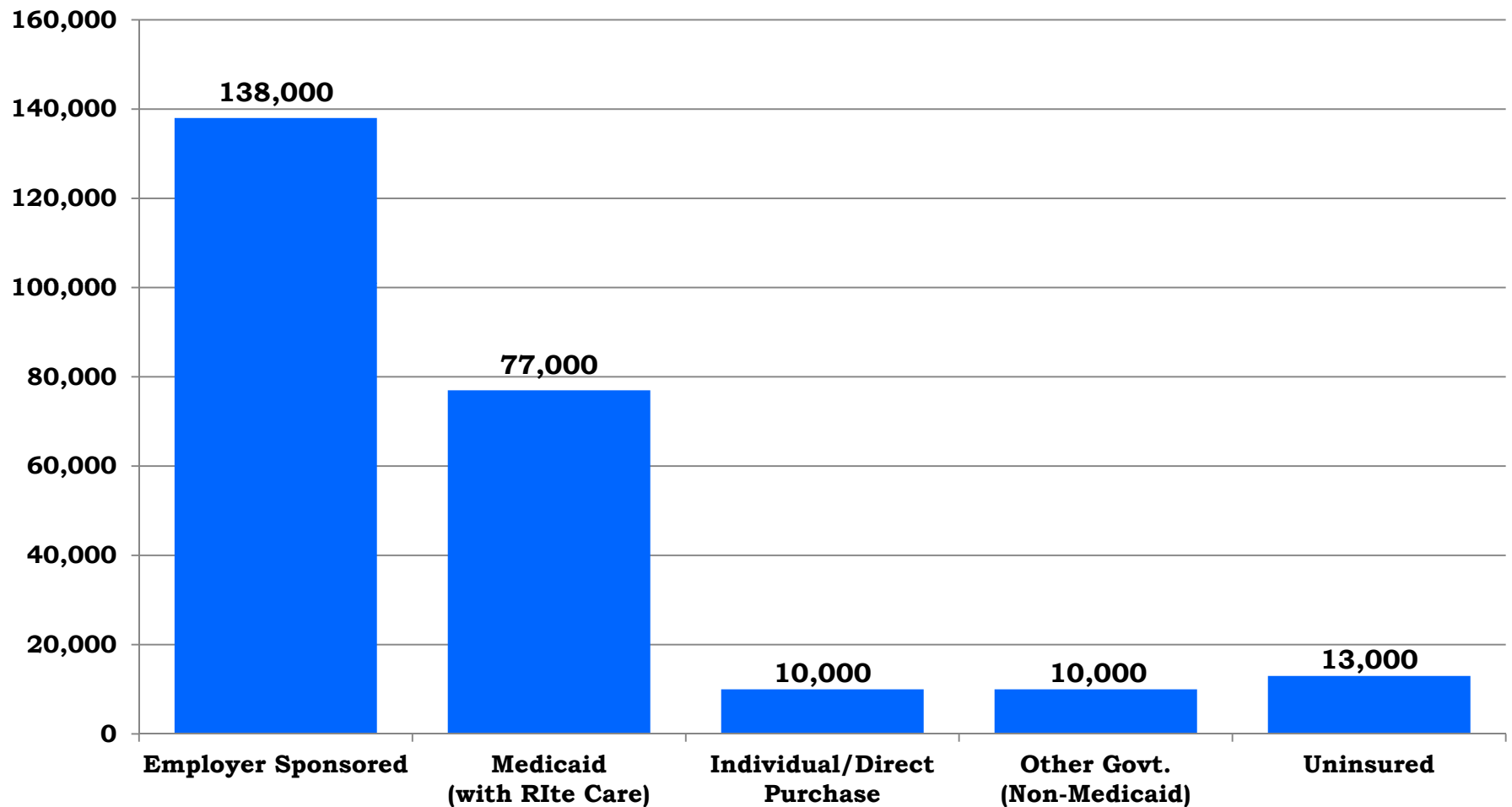
100% of children living in Rhode Island are covered by affordable, high quality health insurance.

Uninsured Children in Rhode Island, 1993-2012



Source: US Census Bureau, Current Population Survey, 1993-2012, three-year averages, labeled by the midpoint year. Data are for children under 18 years of age. Prepared by Rhode Island KIDS COUNT, 2013.

How are Children Covered?



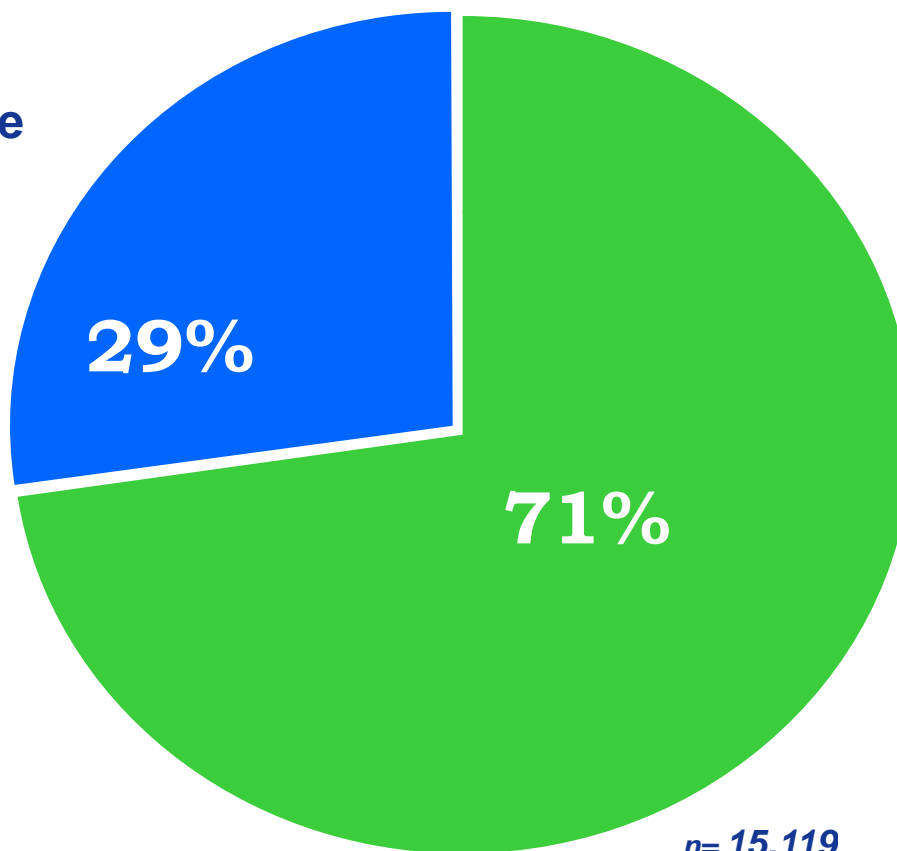
Source: Rhode Island KIDS COUNT analysis of the U.S. Census Bureau, Current Population Survey, 2010-2012, RI, three-year average

Who are the Uninsured Children?

Children Under Age 19 Without Health Insurance, by Poverty Level, Rhode Island

29% Not Income-Eligible for Rlte Care (4,328)

They live in families who are not offered or cannot afford ESI.



71% Income-Eligible for Rlte Care (10,791)

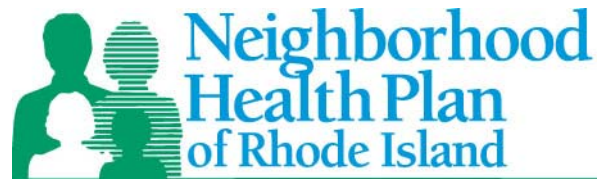
They live in families that do not know about Rlte Care, face administrative barriers, or are ineligible due to immigration status.

Population Reference Bureau analysis of the U.S. Census Bureau, Current Population Survey, 2010-2012, RI, three-year average

Rite Care: Cost-Effective and High Quality

National Ranking of Rite Care Health Plans Among Medicaid Health Plans in the U.S.

4th Neighborhood Health Plan of RI (85.7%)

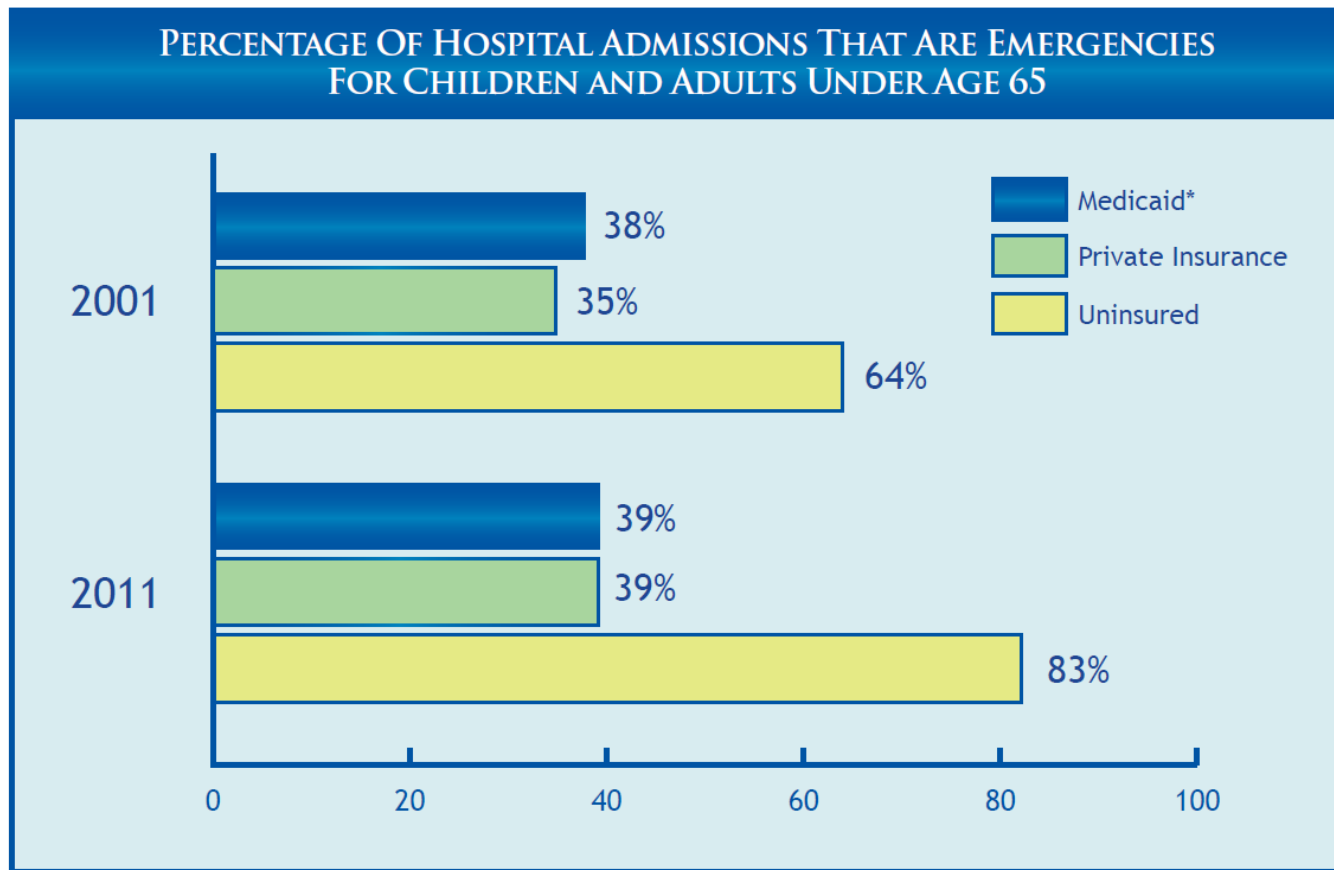


8th UnitedHealthcare Community Plan of RI (85.2%)



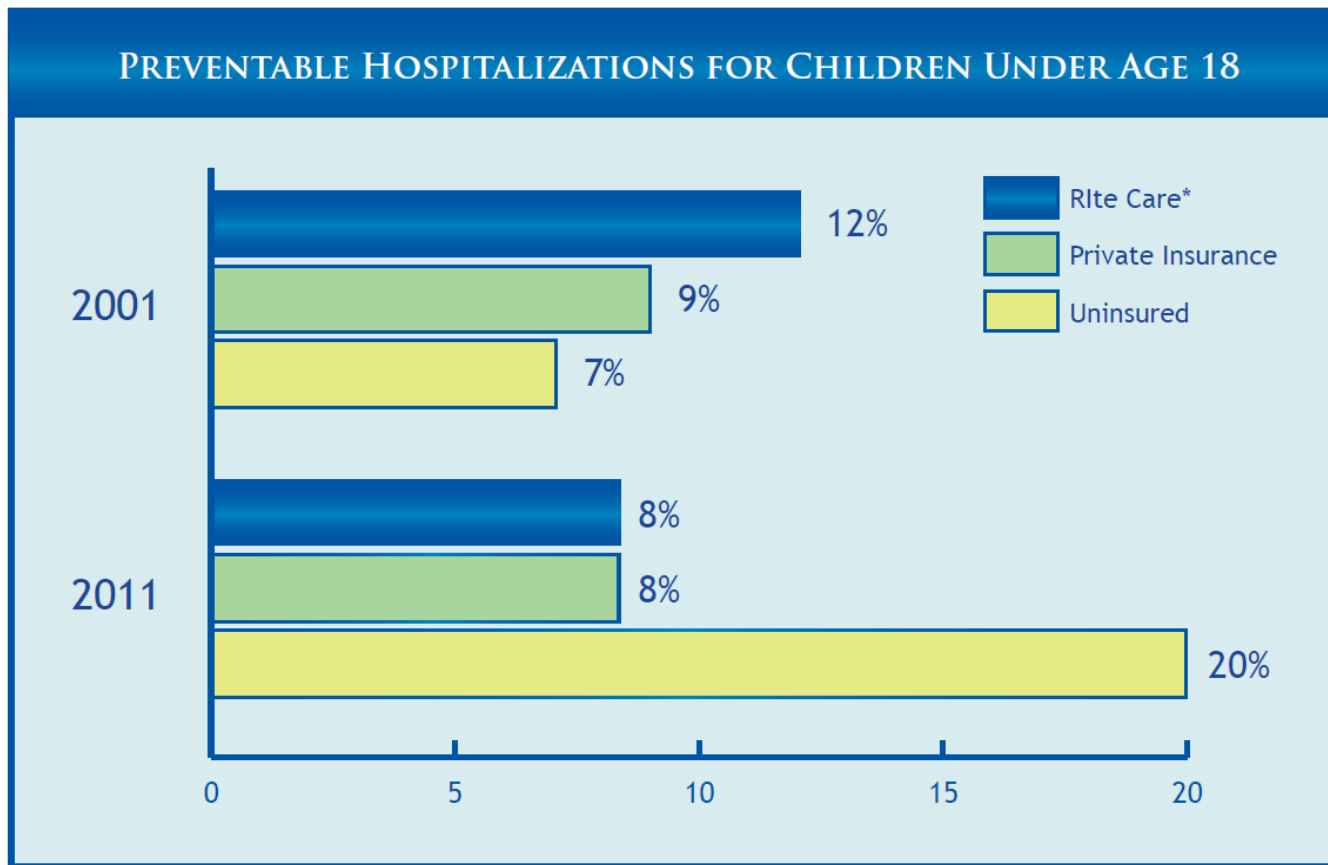
Source: 2013 U.S. News & World Report , National Committee on Quality Assurance rankings
260 Medicaid Health Plans were evaluated and 131 were ranked based on clinical performance, member satisfaction, and NCQA Accreditation.

Rite Care Works for Families



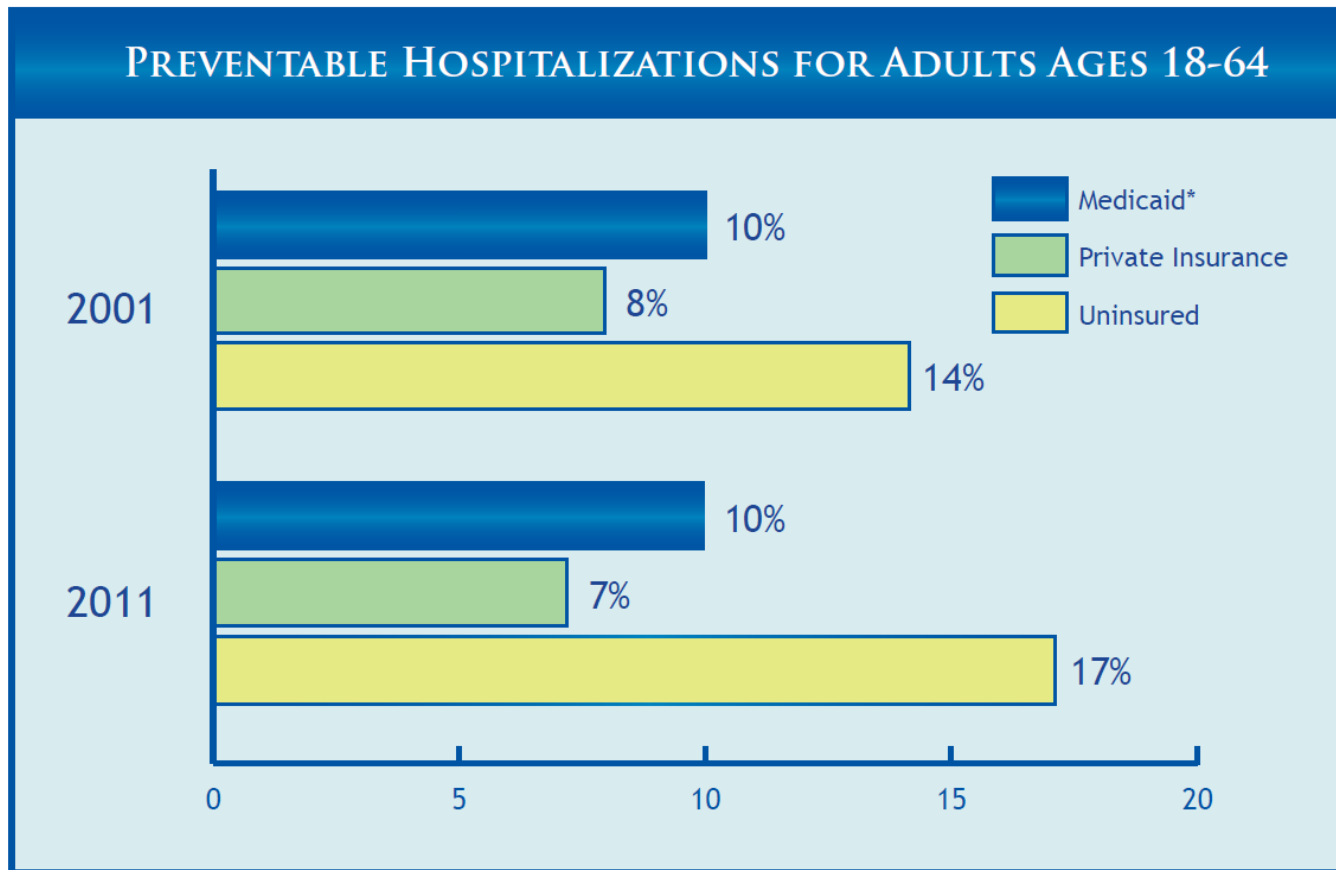
Emergency hospital admissions for children and adults with Rite Care/Medicaid and those privately insured are much lower than the uninsured.

Rite Care Works for Families



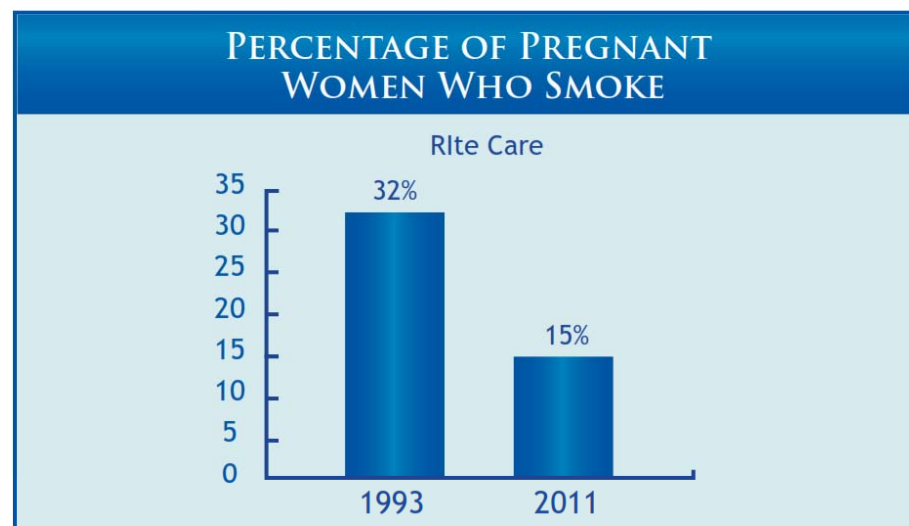
Children who have either Rite Care or private health insurance have fewer preventable hospitalizations than uninsured children.

Rite Care Works for Families



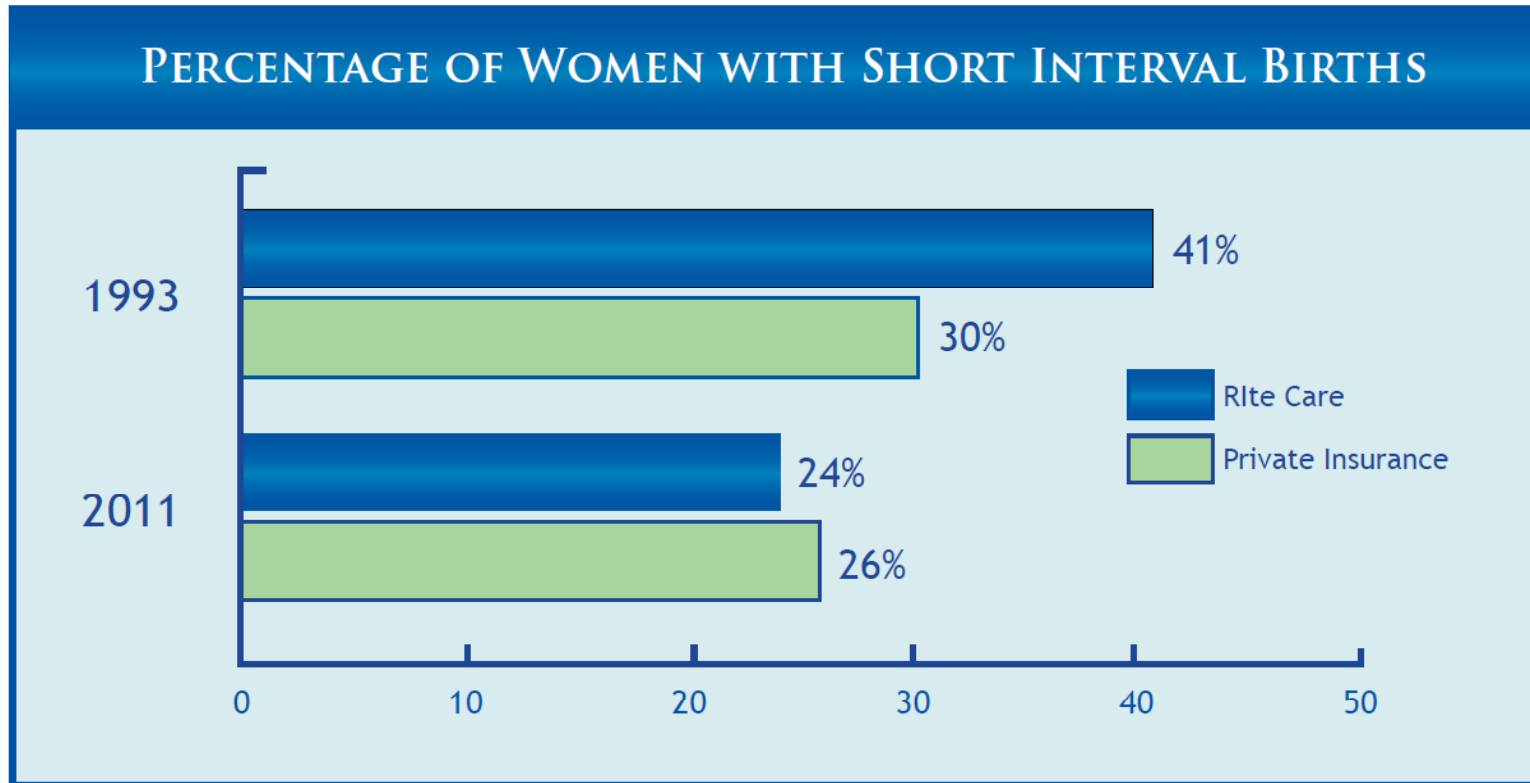
While adults with private health coverage have the lowest preventable hospitalization rates, those with Rite Care/Medicaid are also much lower than adults without insurance.

Rite Care Works for Pregnant Women



Fewer women with Rite Care coverage smoke during pregnancy.

Rite Care Works for Pregnant Women



In 2011, the percentage of women with short term births (less than 18 months in between) was lower for women with Rite Care than those with private insurance.

RItE Care Works for Babies



- **Low birthweight rates** have remained fairly steady among babies with RItE Care coverage, while increasing among babies with private coverage.
- **Infant mortality** rates have fallen over the past two decades. RI's most recent infant mortality rate for all births was above the national average.

Rite Care Works for Children

High Primary Health Care Provider Visit Rates

- **98%** of infants and toddlers have a primary health care provider.
- **95%** of preschool and early elementary school children have a primary health care provider.
- **85%** of children have been screened for lead poisoning (national Medicaid average is **68%**).



Source: Results of 2012 HEDIS and CAHPS Measures in Rite Care's Performance Goal Program as reported in *Monitoring Quality and Access in Rite Care and Rhody Health Partners*, EOHHS, October 2013.

Rlte Care Works for Parents



- **93%** pregnant women received timely prenatal care.
- **91%** of parents with Rlte Care coverage had an ambulatory or preventive care visit.
- Children have better access to care when their parents also have health coverage.

Source: Results of 2012 HEDIS and CAHPS Measures in Rlte Care's Performance Goal Program as reported in Monitoring Quality and Access in Rlte Care & Rhody Health Partners, EOHHS, October 2013

Children's Coverage - Now

| Household Income by Federal Poverty Level | | | | | | | | |
|---|-----------------------------|----------|----------|----------|--------|--|--|--|
| | 0-138% | 139-175% | 176-250% | 251-400% | > 400% | | | |
| Children (under 19) | Rlte Care Plans | | | | | | | |
| Pregnant Women | | | | | | | | |
| Parents & Caretakers | Rlte Care Plans | | | | | | | |
| Children with Special Health Care Needs | Rlte Care / Katie Beckett | | | | | | | |
| Former Foster Youth | Medicaid Ages 18-21 only | | | | | | | |

Children's Coverage - Now

| Household Income by Federal Poverty Level | | | | | | | |
|---|-----------------------------|----------|----------|------------------------|--------|--|--|
| | 0-138% | 139-175% | 176-250% | 251-400% | > 400% | | |
| Children (under 19) | Rlte Care Plans | | | Potential Coverage Gap | | | |
| Pregnant Women | | | | | | | |
| Parents & Caretakers | Rlte Care Plans | | | | | | |
| Children with Special Health Care Needs | Rlte Care / Katie Beckett | | | | | | |
| Former Foster Youth | Medicaid Ages 18-21 only | | | | | | |

Children's Coverage - 2014

| Household Income by Federal Poverty Level | | | | | | | |
|---|-----------------------------|----------|----------|----------|--------|--|--|
| | 0-138% | 139-175% | 176-250% | 251-400% | > 400% | | |
| Children (under 19) | Rlte Care Plans | | | | | | |
| Pregnant Women | | | | | | | |
| Parents & Caretakers | Rlte Care Plans | | | | | | |
| Children with Special Health Care Needs | Rlte Care / Katie Beckett | | | | | | |
| Former Foster Youth | Medicaid Ages 18-21 only | | | | | | |

Children's Coverage - 2014

| Household Income by Federal Poverty Level | | | | | | | |
|---|-----------------------------|----------|----------|-----------------|--------|--|--|
| | 0-138% | 139-175% | 176-250% | 251-400% | > 400% | | |
| Children (under 19) | Rlte Care Plans | | | HealthSource RI | | | |
| Pregnant Women | | | | | | | |
| Parents & Caretakers | Rlte Care Plans | | | | | | |
| Children with Special Health Care Needs | Rlte Care / Katie Beckett | | | | | | |
| Former Foster Youth | Medicaid Ages 18-21 only | | | | | | |

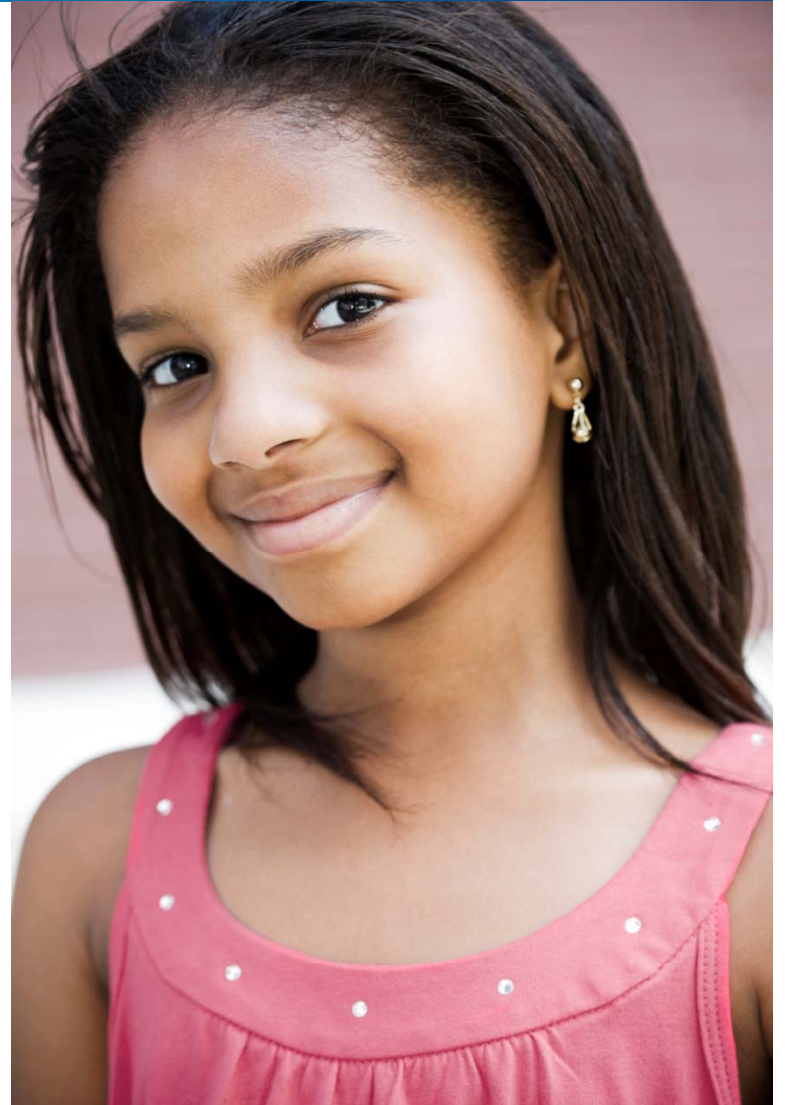
Children's Coverage - 2014

| Household Income by Federal Poverty Level | | | | | | | |
|---|------------------------------------|----------|----------|-----------------|--------|--|--|
| | 0-138% | 139-175% | 176-250% | 251-400% | > 400% | | |
| Children (under 19) | Rlte Care Plans | | | HealthSource RI | | | |
| Pregnant Women | | | | | | | |
| Parents & Caretakers | Rlte Care Plans | | | | | | |
| Children with Special Health Care Needs | Rlte Care / Katie Beckett | | | | | | |
| Former Foster Youth | Rlte Care Plans Ages 18-26 only | | | | | | |

What's Next for Children's Health?

Good News

- ACA maintains Rite Care eligibility levels for children
- General Assembly eliminated monthly Rite Care premiums for kids
- ACA extends Rite Care coverage for youth aging out of foster care until age 26
- ACA requires Essential Health Benefits for commercial coverage, including dental and vision



What's Next for Children's Health?



Challenges

- Connect parents to affordable coverage
- Monitor and improve affordability for families
- Promote help with applying – make every door the right door

What's Next for Children's Health?

Opportunities

- Build on what's worked in Rhode Island for 2 decades – RItE Care.
- Ensure comprehensive coverage for kids.
- Put out the welcome mat!



Let's Cross the Finish Line for Kids!



<http://www.flickr.com/photos/bormann69/4890755009>

A Celebration of Children's Health

